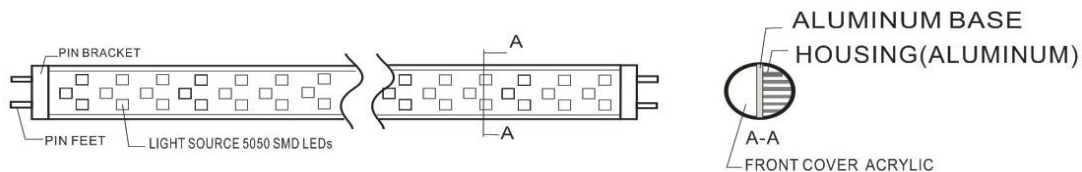


# T8 LED Tube Light

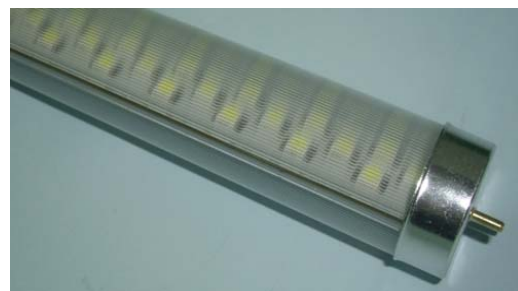
T8 LED Tube Light is the next generation solution to replace conventional fluorescent light. They feature higher efficiency, more reliability, no mercury, no recycling, no flickering, no buzzing, instant start, cold temperature operation, and high quality light compared to the previous generation. They are well-suited for use anywhere, homes, offices, museums, galleries, shop windows, hotels, restaurants, meeting rooms, just like conventional fluorescent lights.



The high quality T8 LED Tube Light is constructed from extruded aluminum to provide a virtually unbreakable, vandal proof lighting solution.



T8 LED Tube Light adopts high efficient 5050 SMD LEDs, which makes them produce equivalent light intensity of 50 watts fluorescent lights at only 25 watts consumption (1.5m). They can directly drop into existing T8 sockets, no need of ballast and starter.



With excellent thermal control technology, and special designed aluminum housing, substantially achieves good thermal property and plays more stable performance and of course will last up to 50,000 hours compared to 5,000 hours from conventional fluorescent lights.

## Features

- **Longer life** than Fluorescent Tube: min 4 years
- 70%~80% **Energy-saving** over Fluorescent tubes
- **Solid State**, high shock/vibration resistant
- Work without ballast
- **No RF interference**

- **No flickering** or buzzing
- Quick and **easy installation** to minimize retrofit costs
- Instant **soft-start**
- **Minimum maintenance** costs
- Produce **little Heat**
- **No Mercury** and other hazardous materials, fully **RoHS-compliant**
- **Continuous operation** for white LEDs (10 years for other colors)
- Rated to operate from -40°F to 122°F [-40°C to 50°C], **perfect for environments** with extreme climates

# Technical Specification

## Optical Specification

Part No	RTL8B-54T3W	RTL8D-108T3W
Color Temperature	Cool white(6000~6500k) ; warm white(3000~3500k)	
Lumens	1080 lm	2160 lm
Luminous Efficacy	83lm/w	

## Electrical Specifications

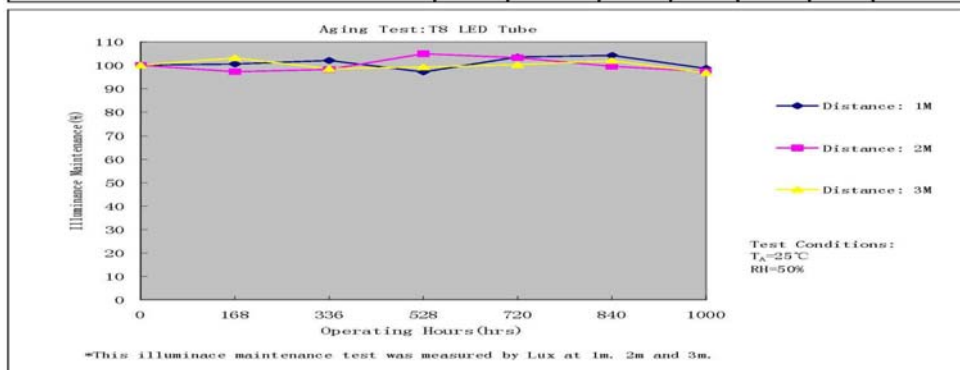
Part No	RTL8B-54T3W	RTL8D-108T3W
Input voltage	110~240V AV	
Consumption	10.8watt	21.6watt
Lighting source	5050 SMD LED	
LED quantity	54pcs SMD5050	108pcs SMD5050

## Physical Specifications

Part No	RTL8B-54T3W	RTL8D-108T3W
Dimension	L600*D26mm(L1.965*D0.0085ft)	L600*D26mm(L3.93*D0.0085ft)
Housing material	Acrylic front cover, Aluminum back cover.	
Net weight	240g	475g
Gross weight	350g	680g

# Test Result

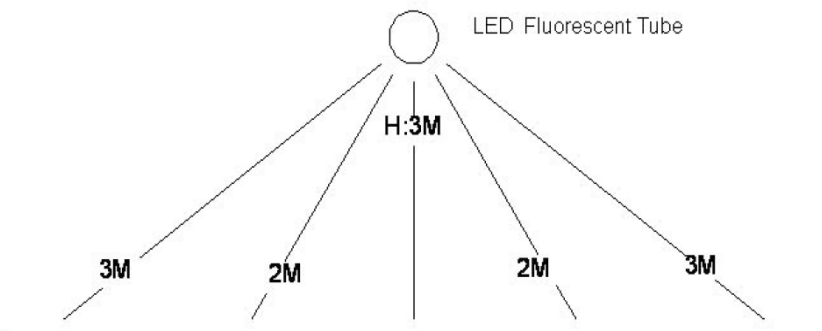
Operating Hours(hrs)	0	168	336	528	720	840	1000
Illuminance Maintenance(% )@ 1 meter	100	100.5	102	97.1	103.5	104	98.6
Illuminance Maintenance(% )@ 2 meter	100	97.2	98.2	105	103.2	99.5	97.3
Illuminance Maintenance(% )@ 3 meter	100	103.1	98.5	99.2	100.2	102	96.8



## Comparison **RTL8D-108T3W** VS Normal Fluorescent

Characteristic	Conventional 36W FTL	LED Fluorescent T8
Expected Life (hrs)	10,000	50,000
Voltage Requirement	120V AC or 240V AC	110V~240V AC
Ballast & Starter	Yes	Without
Power consumption (tube only)	36W	36W
Power consumption	48W	36W
Energy-saving rate	--	65%

### ◆ Measurement from 3 meter height vertically ◆



## Package



T8s is CE approved and RoHS compliant. Just choose T8s for illumination lighting, task lighting, display lighting and back lighting.

Price

Part No	<b>RTL8B-54T3W</b>	<b>RTL8D-108T3W</b>
Price	28\$/pc	51\$/pc

**RIGHTLEDS** 中正零度

Zhoushi Road,Shiyan Town,Shenzhen ,China

P: 86 755 2765 6979 • F: 86 755 2765 6780 • [www.rightleds.com](http://www.rightleds.com) • [info@rightleds.com](mailto:info@rightleds.com)

**RIGHTLEDS** 中正零度 Copyright © 2001-2009 RightLEDs Co., Ltd

Tel: 86-755-27656525-802 Fax: 86-755-2765 6780

Web: [www.RightLEDs.com](http://www.RightLEDs.com) E-mail: [info@rightleds.com](mailto:info@rightleds.com)